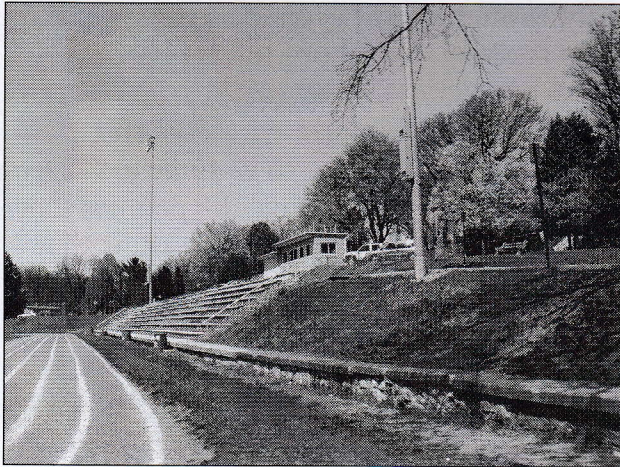


## Then and Now...

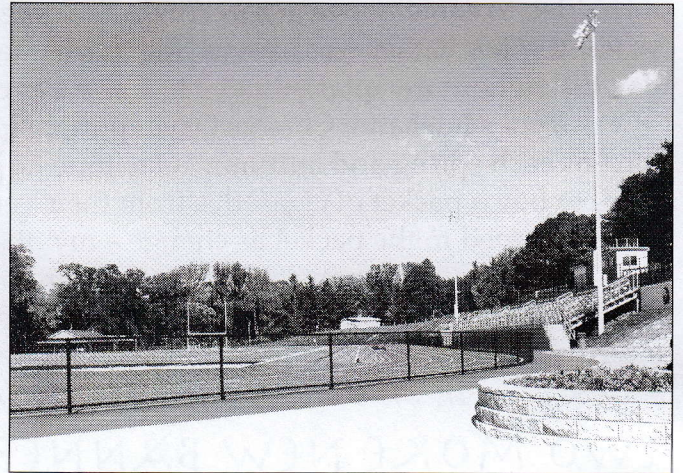
Below are photos of the track and field at Siebert Park. From its construction in 1937 until its redesign and rebuild in 2014, there was little change in the cinder track and concrete bleachers. It is now man-made materials, which in the case of the track, is most comfortable on the feet and knees. The field can be used daily for any number of sports including football, soccer and field hockey.

There is a blue and white CH emblem in the center of the field, and the end zones are blue! Yard markers are also indestructible. The guest bleachers on the far side remain metal. The home side bleachers are now also metal, which is colder and harder to sit on than the wooden covered concrete "steps" had been.

Camp Hill residents can obtain a "pass" to gain entry to the track and field by applying at Borough Hall. This free pass operates a rotating entrance at the far end of the track. One pass per family.



*April 17, 2006 photo by Don Yeiser, Class of '56*



*from the Mary Enterline Fenical 1963 collection*



**Please phone, e-mail or write to the Editor with your stories/comments/suggestions:  
Jinny Springen, 134 N. 23<sup>rd</sup> Street, Camp Hill, PA 17011 or 737-0311, or  
[CampHillHistory@aol.com](mailto:CampHillHistory@aol.com)**

**Be sure to visit our website: [www.historicalsocietyofcamphill.org](http://www.historicalsocietyofcamphill.org)**

***We are a 501(c)(3) charitable organization***